



Bentley Steel Ltd
 Traen Hill,
 Lusk,
 Co. Dublin.
 Tel: 01 843 7345/843 9909
 Fax: 01 843 7922
 Email: info@bentleysteel.ie

Mild Steel Angle



25x25x3mm	6.1m
25x25x5mm	6.1m
30x30x3mm	6.1m
30x30x5mm	6.1m
40x40x5mm	6.1m
40x40x5mm	6.1m
40x40x6mm	6.1m
50x50x5mm	5.5, 6.1m
50x50x6mm	6.1m
60x60x6mm	6.1m
70x70x6mm	6.1m
80x80x6mm	6.1, 12.2m
80x80x8mm	6.1m
100x100x8mm	12.2m
100x100x10mm	6.1, 12.2
100x100x12mm	12.2m
120x120x8mm	12.2m
150x150x10mm	12.2m
200x200x16mm	12.2m
.....
75x50x6mm	6.1m
100x65x7mm	12.2m
100x75x8mm	12.2m
125x75x10mm	12.2m
150x90x10mm	12.2m
150x190x12mm	12.2m

Mild Steel Box Section



20x20x2mm	7.6m
25x25x2mm	7.6m
25x25x2.5mm	7.6m
25x25x3mm	7.6m
30x30x2mm	7.6m
30x30x2.5mm	7.6m
40x40x2mm	7.6m
40x40x2.5mm	7.6m
40x40x3mm	7.6m
40x40x4mm	7.6m
50x50x2mm	7.6m
50x50x2.5mm	7.6m
50x50x3mm	7.6m
50x50x4mm	7.6m
50x50x5mm	7.6m
60x60x3mm	7.6m
60x60x5mm	7.6m
70x70x3mm	7.6m
70x70x5mm	7.6m
80x80x3mm	7.6m
80x80x5mm	7.6m
90x90x3mm	7.6m
90x90x5mm	7.6m
100x100x4mm	7.6m
100x100x5mm	7.6m
100x100x6mm	7.6m
120x120x5mm	7.6m
150x150x5mm	7.6m
.....
50x25x2.5mm	7.6m
60x40x3mm	7.6m
80x40x3mm	7.6m
100x50x3mm	7.6m
100x50x5mm	7.6m
100x60x3.6mm	7.6m

Mild Steel Channels



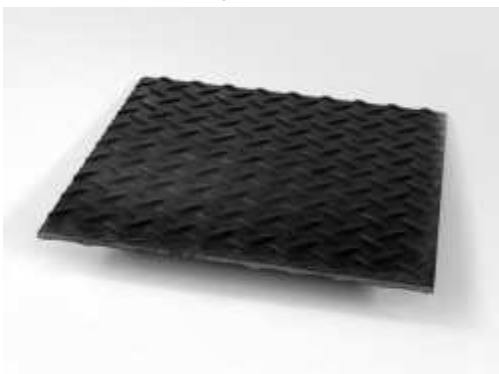
76X38mm	6.1m
102x51mm	6.1m
127x64mm	6.1m
152x76mm	6.1m, 12.2m
178x76mm	6.1m, 12.2m
200x76mm	6.1m, 12.2m
260x95mm	12.2m
150x90mm	12.2m
152x90mm	12.2m
180x90mm	12.2m
200x90mm	12.2m
260x90mm	12.2m
300x90mm	12.2m

Mild Steel Squares



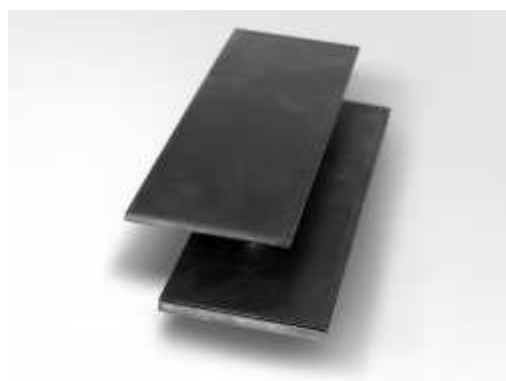
10mm	6.1m
12mm	6.1m
16mm	6.1m
20mm	6.1m
25mm	6.1m
30mm	6.1m
40mm	6.1m
50mm	6.1m

Chequer Plate



2000x 1000x3mm
2000x 1000x4.5mm
2000x 1000x6mm
2500x 1250x3mm
2500x 1250x4.5mm
2500x 1250x6mm
2500x 1250x8mm

Mild Steel Flat



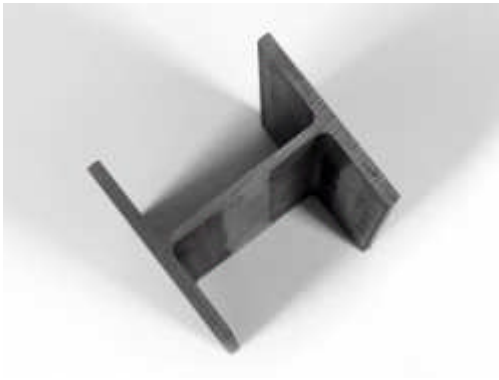
12x3mm	6.1m	100x6mm	6.1m	300x10mm	6.1m
12x5mm	6.1m	100x10mm	6.1m	300x12mm	6.1m
16x5mm	6.1m	100x12mm	6.1m	300x15mm	6.1m
20x3mm	6.1m	100x15mm	6.1m	300x20mm	6.1m
25x3mm	6.1m	100x25mm	6.1m	300x25mm	6.1m
25x6mm	6.1m	130x10mm	6.1m	400x15mm	6.1m
25x10mm	6.1m	150x6mm	6.1m	400x20mm	6.1m
30x5mm	6.1m	150x10mm	6.1m	400x25mm	6.1m
30x6mm	6.1m	150x12mm	6.1m	450x15mm	6.1m
30x10mm	6.1m	150x15mm	6.1m		
40x6mm	6.1m	150x20mm	6.1m		
40x8mm	6.1m	180x10mm	6.1m		
40x10mm	6.1m	180x12mm	6.1m		
40x12mm	6.1m	200x10mm	6.1m		
50x6mm	6.1m	200x12mm	6.1m		
50x10mm	6.1m	200x15mm	6.1m		
50x12mm	6.1m	200x20mm	6.1m		
50x15mm	6.1m	250x10mm	6.1m		
75x6mm	6.1m	250x12mm	6.1m		
75x10mm	6.1m	250x15mm	6.1m		
75x12mm	6.1m	250x20mm	6.1m		
75x15mm	6.1m	250x25mm	6.1m		
75x25mm	6.1m				

Mild Steel Plate



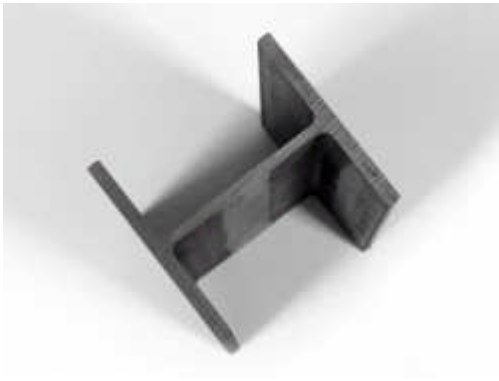
2000x1000x3mm	2500x1250x1.6mm	3000x1500x2mm
2000x1000x4mm	2500x1250x2mm	3000x1500x3mm
2000x1000x5mm	2500x1250x2.5mm	3000x1500x4mm
2000x1000x6mm	2500x1250x3mm	3000x1500x5mm
	2500x1250x4mm	3000x1500x6mm
	2500x1250x5mm	3000x1500x8mm
	2500x1250x6mm	3000x1500x10mm
	2500x1250x8mm	3000x1500x12mm
	2500x1250x10mm	3000x1500x16mm
	2500x1250x12mm	3000x1500x20mm
	2500x1250x16mm	3000x1500x25mm
	2500x1250x20mm	
	2500x1250x25mm	

I.P.E.



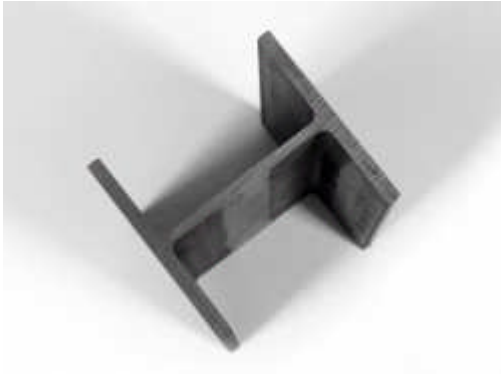
I.P.E. 100	12.2m
I.P.E. 160	11.1, 12.2, 14.1m
I.P.E. 180	10.1, 11.1, 12.2, 14.1, 15.3m
I.P.E. 200	11.1, 12.2, 14.1, 15.3m
I.P.E. 220	12.2, 14.1, 15.3m
I.P.E. 240	12.2, 14.1, 15.3m
I.P.E. 270	12.2, 14.1, 15.3m
I.P.E. 300	12.2, 14.1, 15.3m

Universal Beams



203x133x25kg/m	12.2, 14, 15.3m
203x133x30kg/m	12.2, 14, 15.3m
254x146x30kg/m	12.2, 14, 15.3m
254x146x37kg/m	12.2, 14, 15.3m
305x165x40kg/m	12.2, 14, 15.3, 18.3m
356x171x45kg/m	12.2, 14m
406x178x54kg/m	12.2, 14m
456x191x67kg/m	12.2, 14, 15.3m
533x210x82kg/m	12.2, 15.3m

Universal_Columns



152x152x23kg/m	12.2,14,15.3m
152x152x30kg/m	12.2,14,15.3m
203x203x46kg/m	12.2,14,15.3,18.3m
254x254x73kg/m	12.2,14,15.3m
305x305x97kg/m	12.2,14,15.3m

C.H.S. Tube

21.3x2.5mm	7.6m
26.9x2.5mm	7.6m
33.7x2.5mm	7.6m
42.4x2.5mm	7.6m
42.4x3mm	7.6m
48.3x3mm	7.6m
6.3x3mm	7.6m
76.1x3mm	7.6m
88.9x3mm	7.6m
114.3x3.6mm	7.6m

Prime Galv Tube



26.9x3mm	6m
33.7x3mm	6m
33.7x3mm	6m
42.4x3mm	6m
48.3x3mm	6m
60.3x3mm	6m
76.1x3mm	6m
88.9x3mm	6m
114.3x3.6mm	6m

Mild Steel Rebar



10mm

6.1m

12mm

6.1m

16mm

6.1m

20mm

6.1m

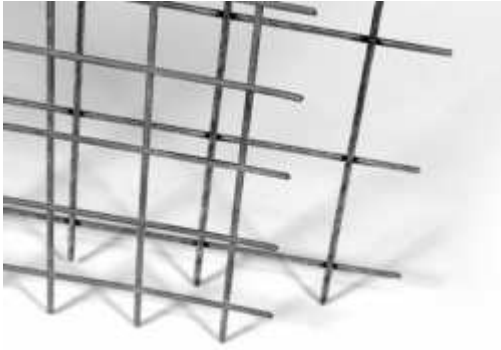
25mm

6.1m

32mm

6.1m

Weld Mesh



25x25x3mm

50x50x3mm

50x50x4mm

Galvanised Weld Mesh

25x25x2.5mm

50x50x3mm

Reinforced Weld Mesh

A142

A252

A393